

1 μm

Mag = 15.00 K X

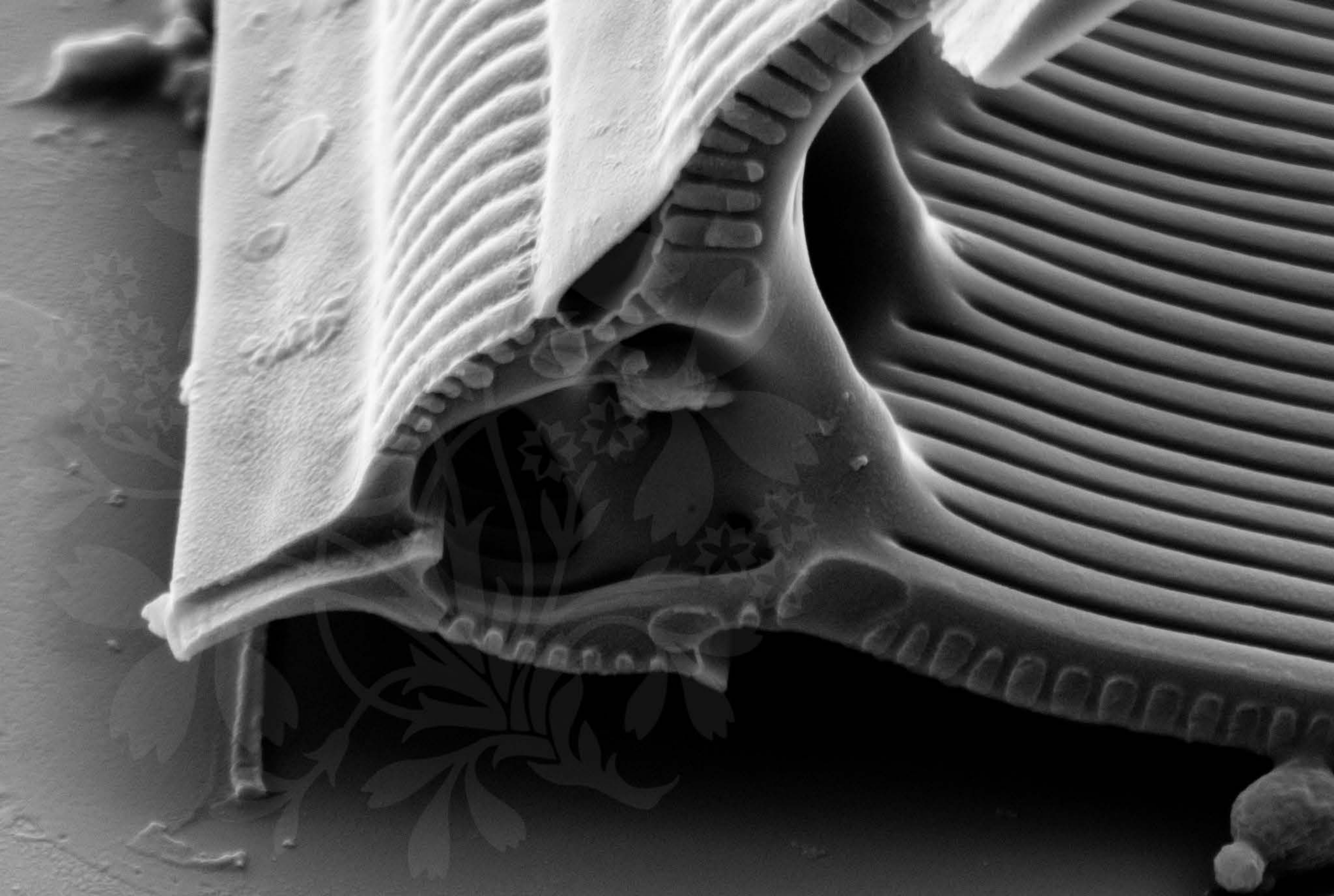
EHT = 4.00 kV

Signal A = SE2 Date :21 Sep 2017

WD = 9.2 mm

File Name = BC0787_01.tif





200 nm
└─┘

Mag = 30.00 K X

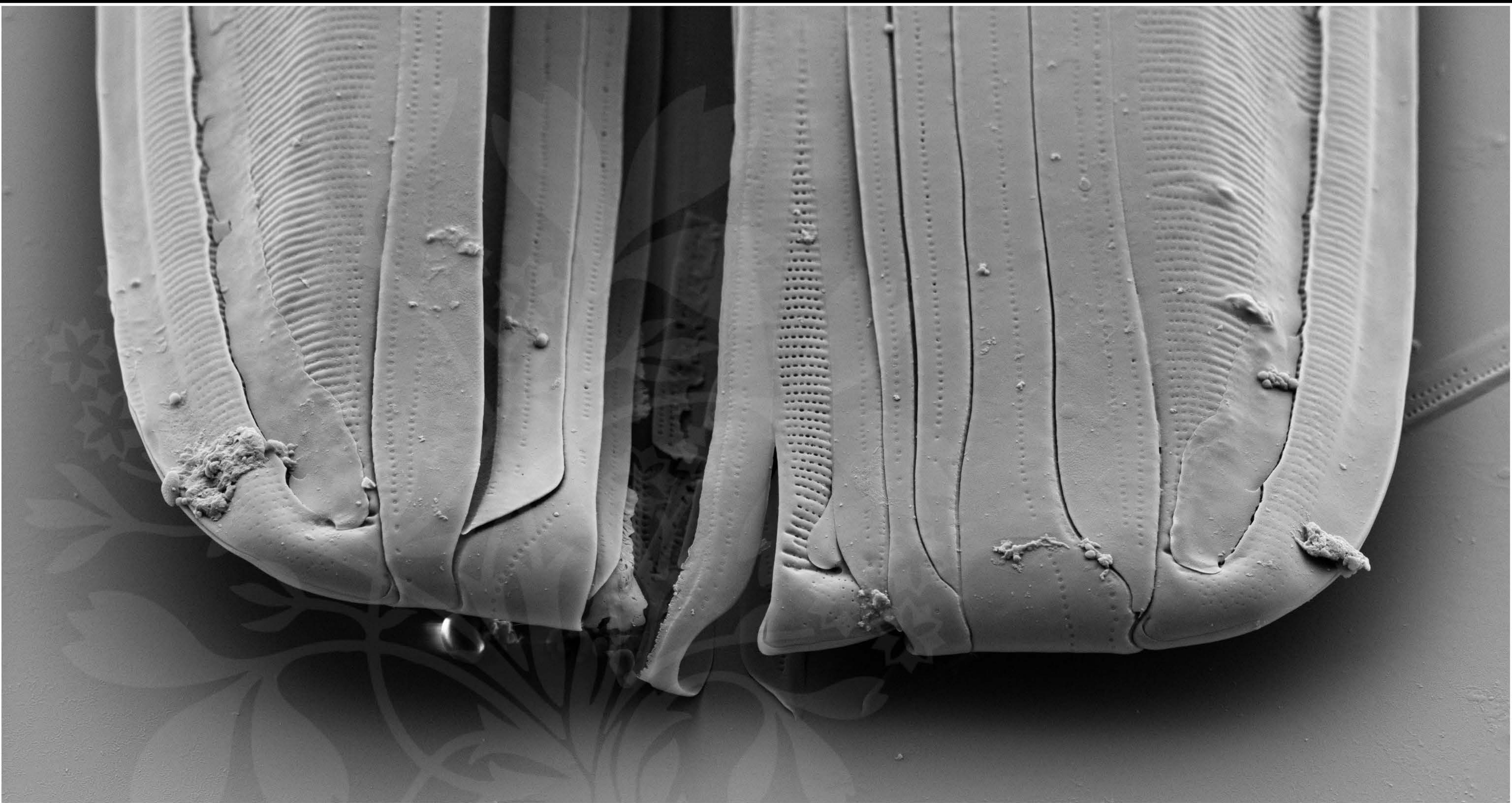
EHT = 4.00 kV

Signal A = SE2 Date :21 Sep 2017

WD = 9.2 mm

File Name = BC0787_02.tif





1 μ m

Mag = 5.00 K X

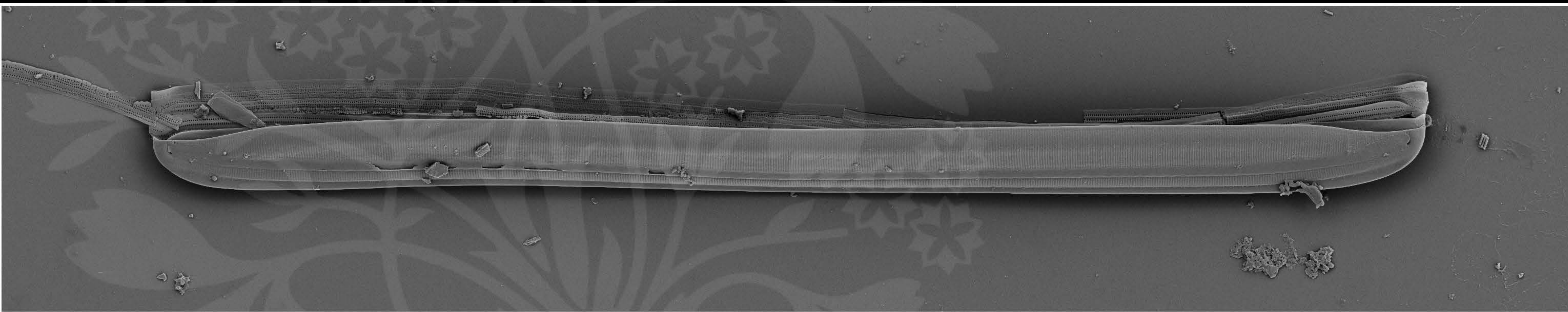
EHT = 4.00 kV

Signal A = SE2 Date :21 Sep 2017

WD = 6.3 mm

File Name = BC0787_03.tif





10 μ m

Mag = 1.00 K X

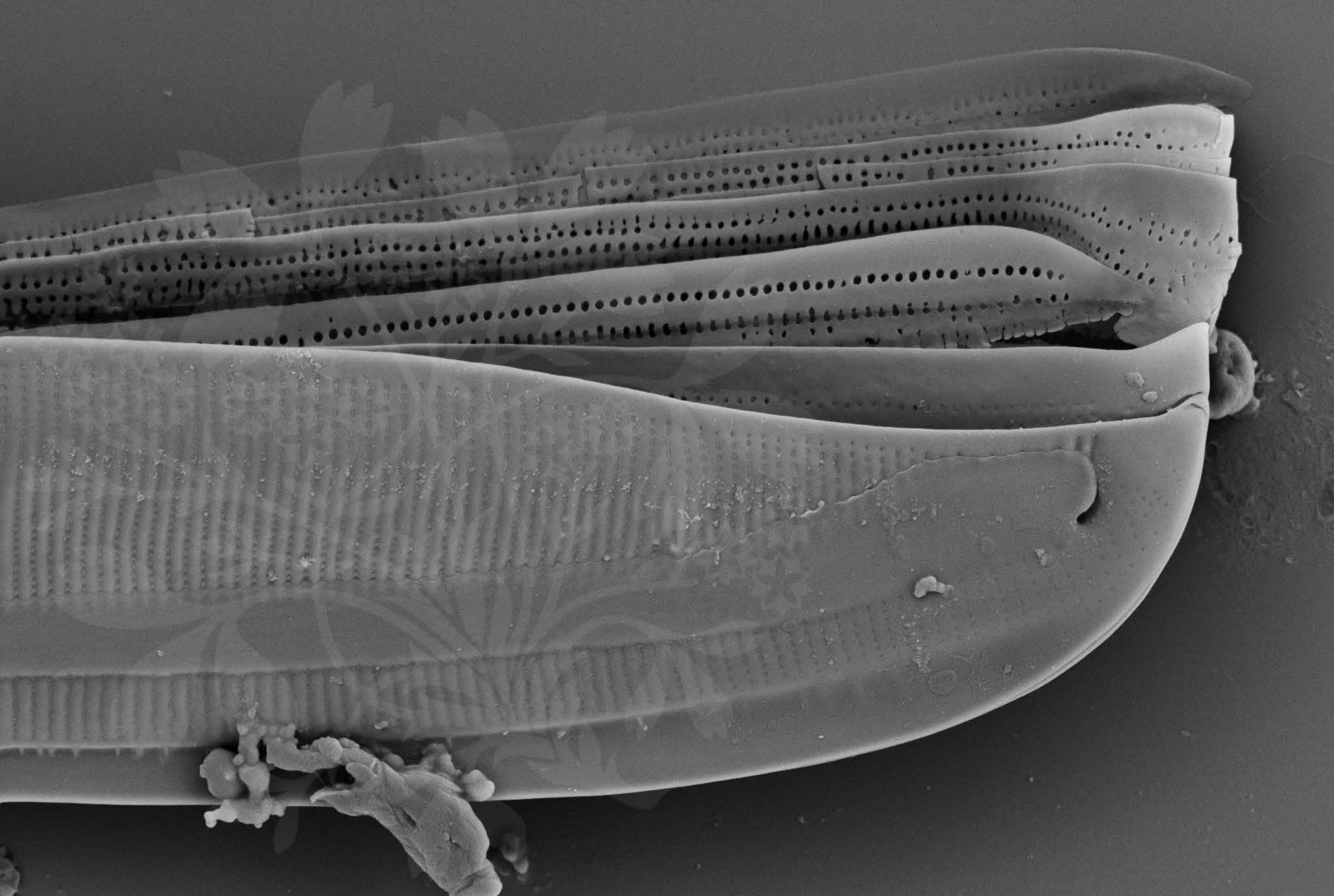
EHT = 4.00 kV

Signal A = SE2 Date :21 Sep 2017

WD = 7.7 mm

File Name = BC0787_04.tif





1 μm

Mag = 8.00 K X

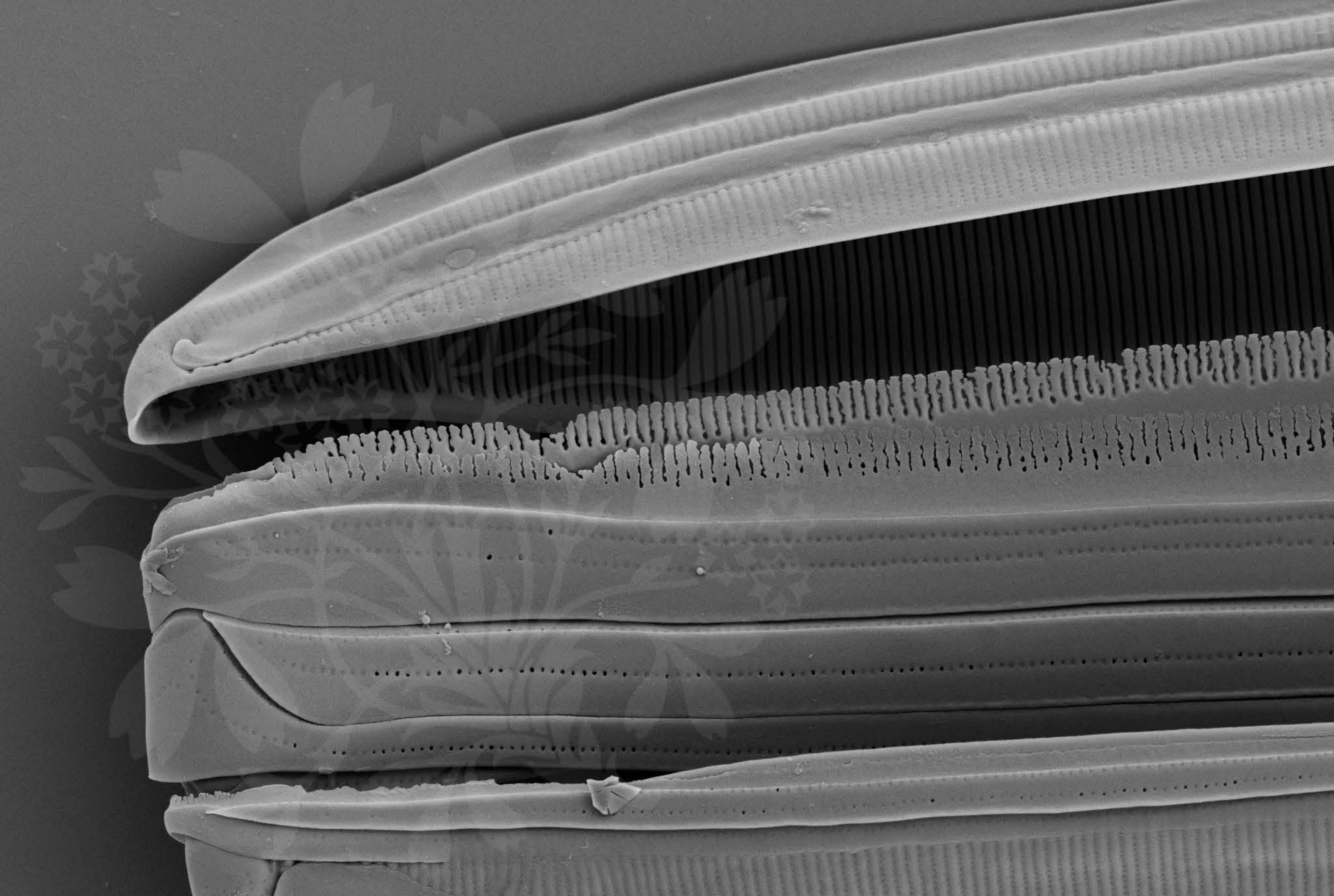
EHT = 4.00 kV

Signal A = SE2 Date :21 Sep 2017

WD = 7.7 mm

File Name = BC0787_05.tif





1 μm

Mag = 6.00 K X

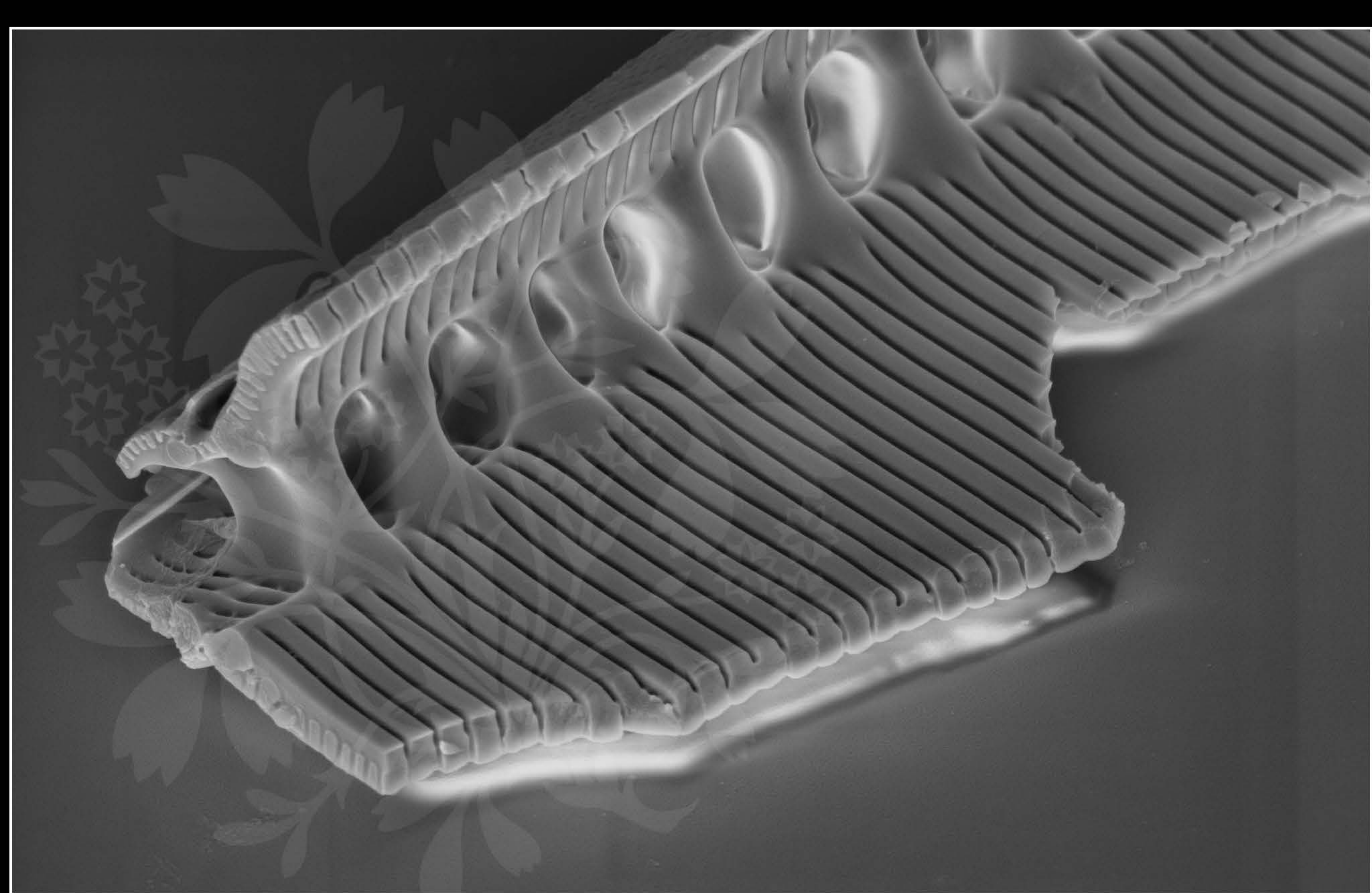
EHT = 4.00 kV

Signal A = SE2 Date :21 Sep 2017

WD = 7.8 mm

File Name = BC0787_06.tif





1 μm

Mag = 14.67 K X

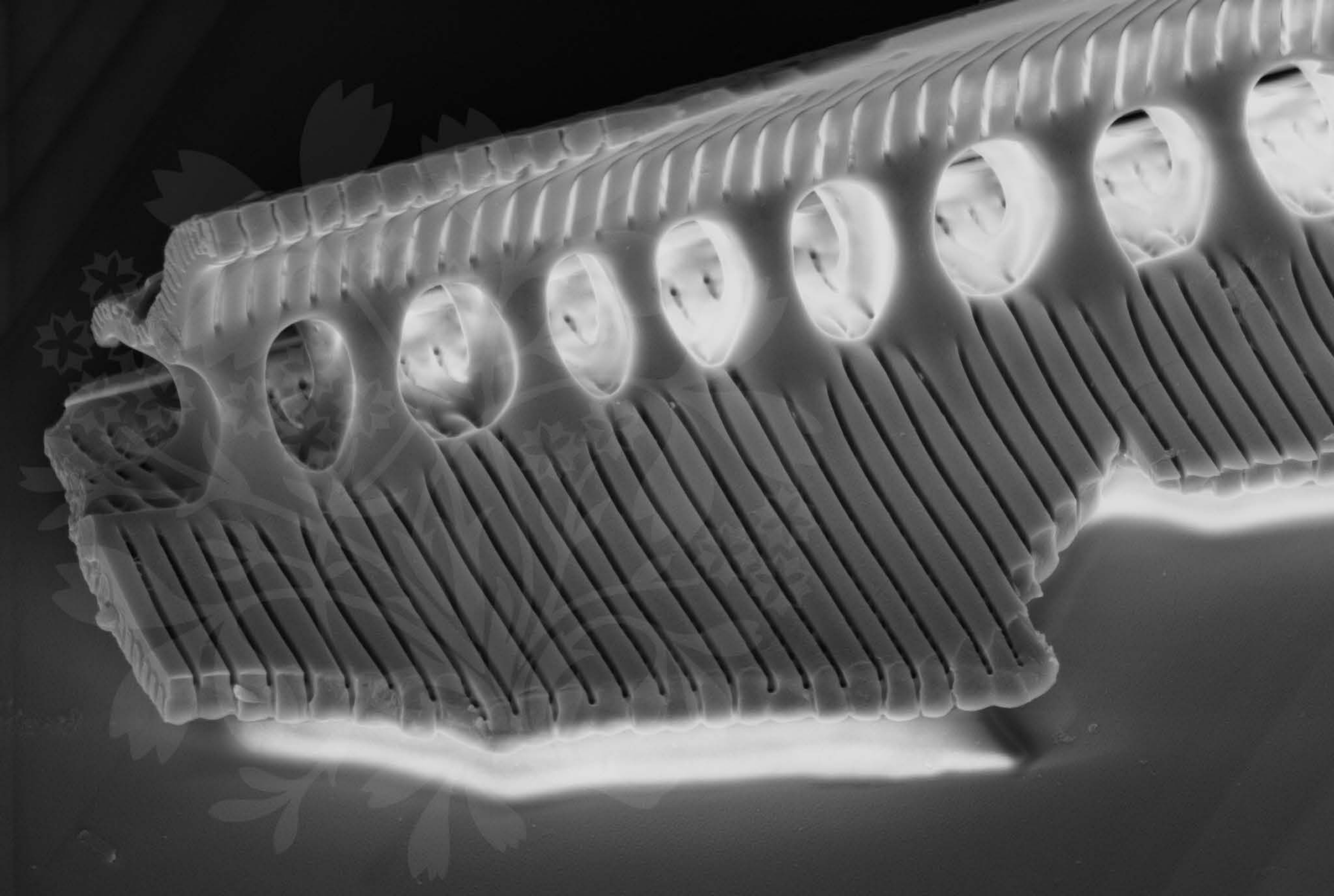
EHT = 4.00 kV

Signal A = SE2 Date :21 Sep 2017

WD = 5.7 mm

File Name = BC0787_07.tif





1 μm

Mag = 16.00 K X

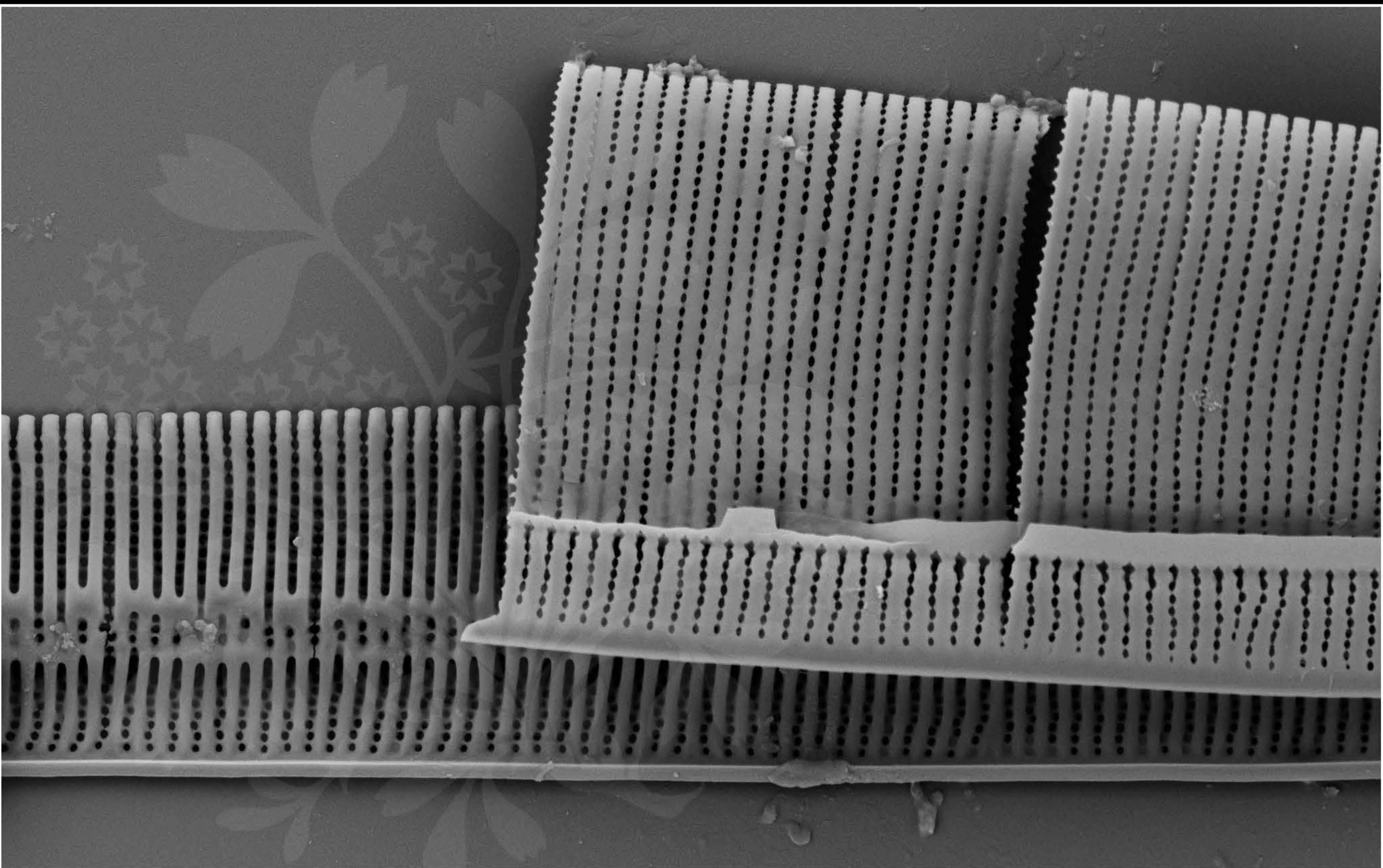
EHT = 4.00 kV

Signal A = SE2 Date :21 Sep 2017

WD = 5.7 mm

File Name = BC0787_08.tif





1 μm

Mag = 10.00 K X

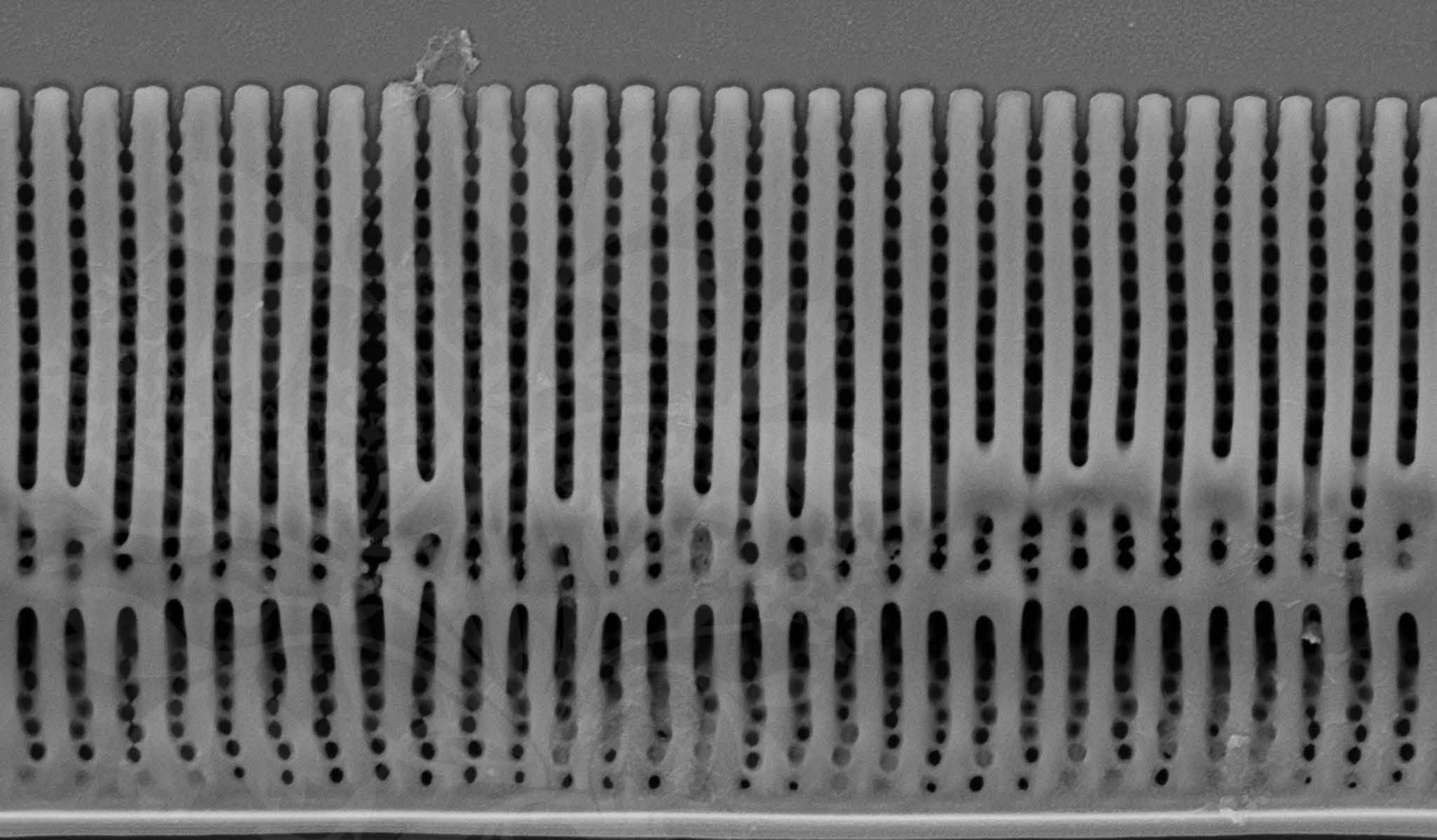
EHT = 4.00 kV

Signal A = SE2 Date :21 Sep 2017

WD = 7.8 mm

File Name = BC0787_09.tif





1 μm

Mag = 20.00 K X

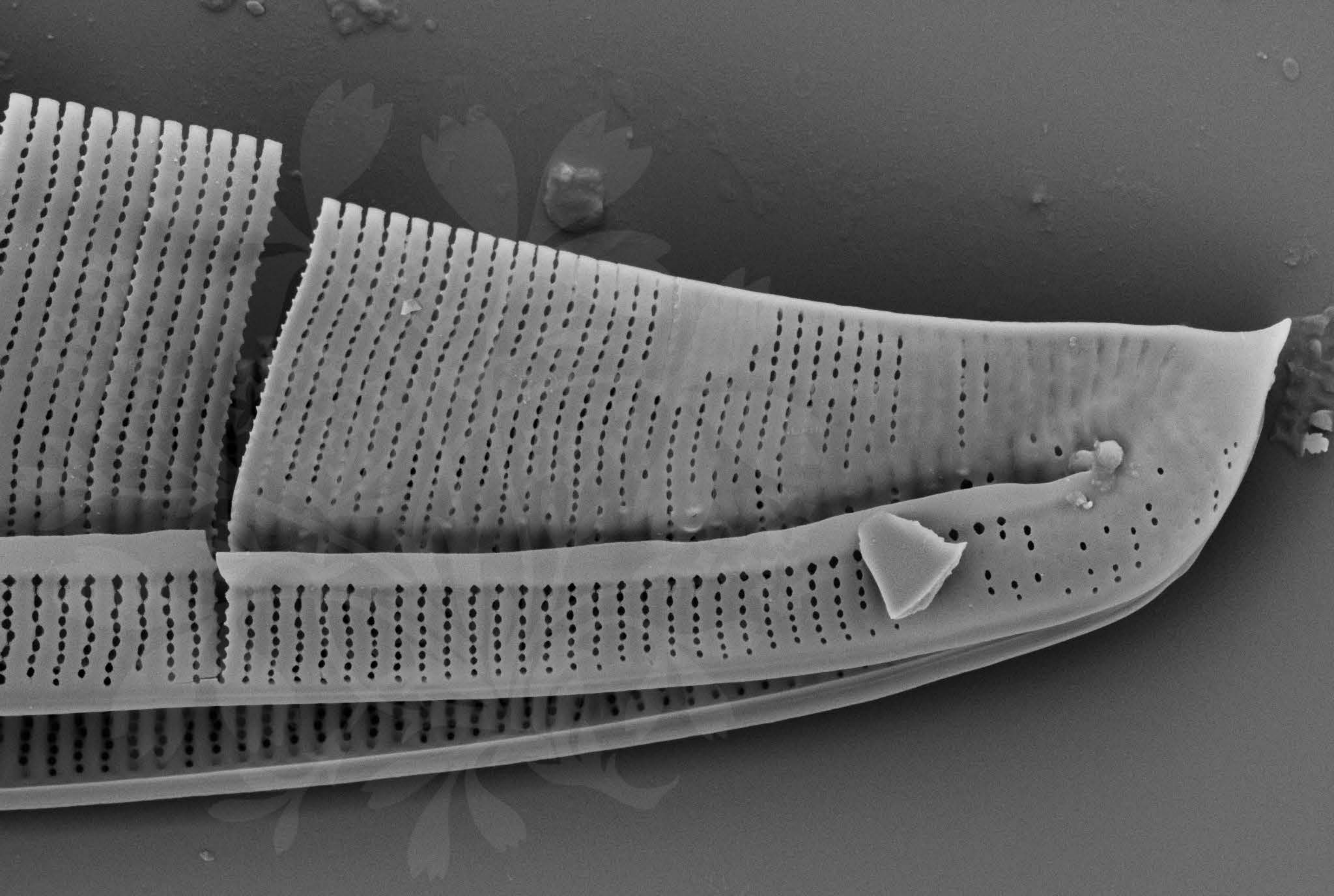
EHT = 4.00 kV

Signal A = SE2 Date :21 Sep 2017

WD = 7.8 mm

File Name = BC0787_10.tif





1 μm

Mag = 12.00 K X

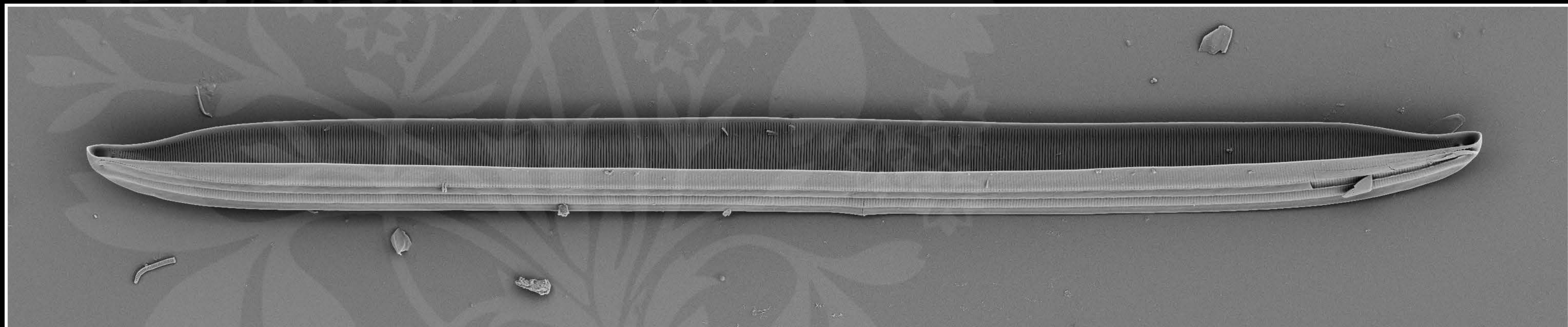
EHT = 4.00 kV

Signal A = SE2 Date :21 Sep 2017

WD = 7.8 mm

File Name = BC0787_11.tif





10 μ m

Mag = 1.10 K X

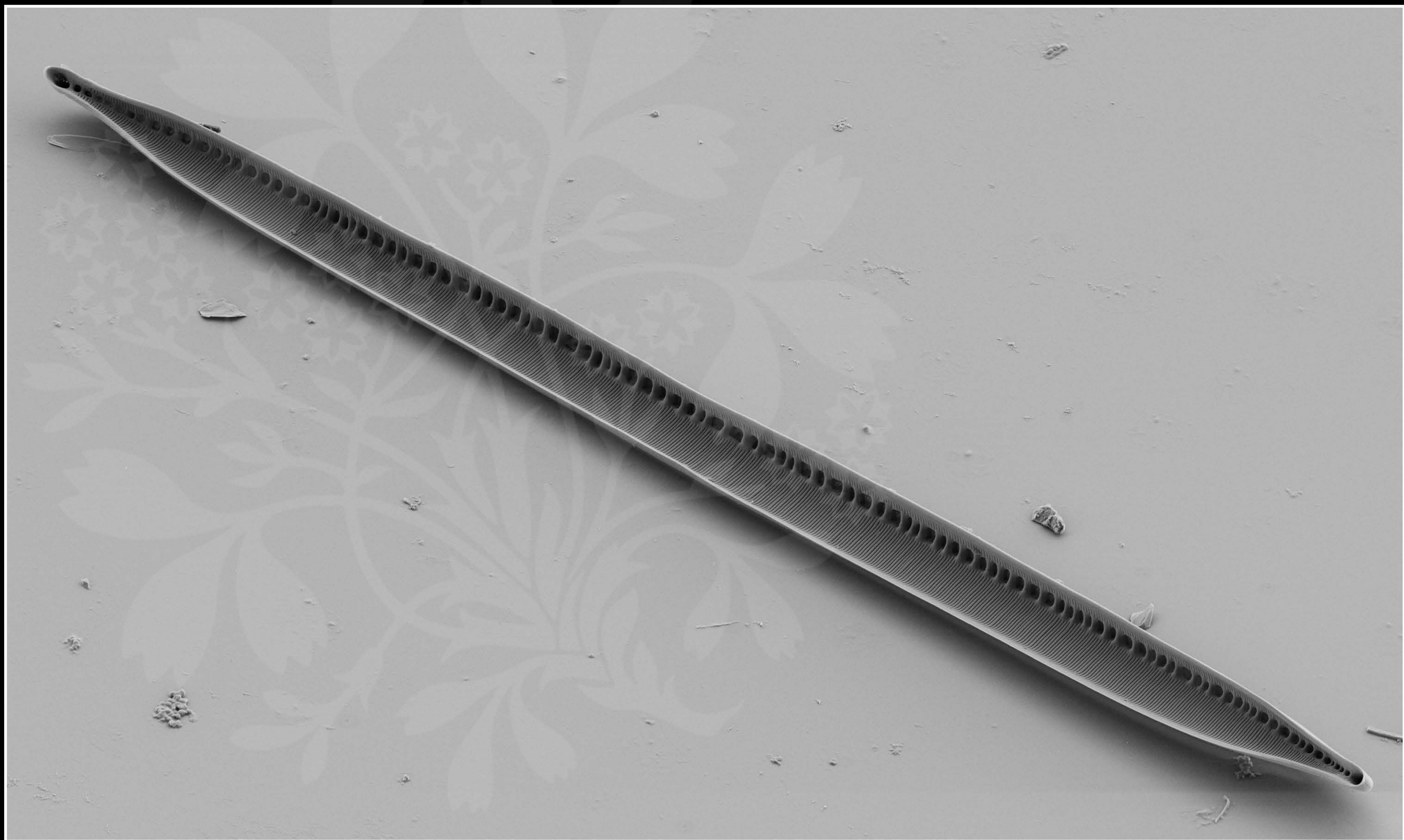
EHT = 4.00 kV

Signal A = SE2 Date :21 Sep 2017

WD = 7.8 mm

File Name = BC0787_12.tif





10 μ m

Mag = 1.50 K X

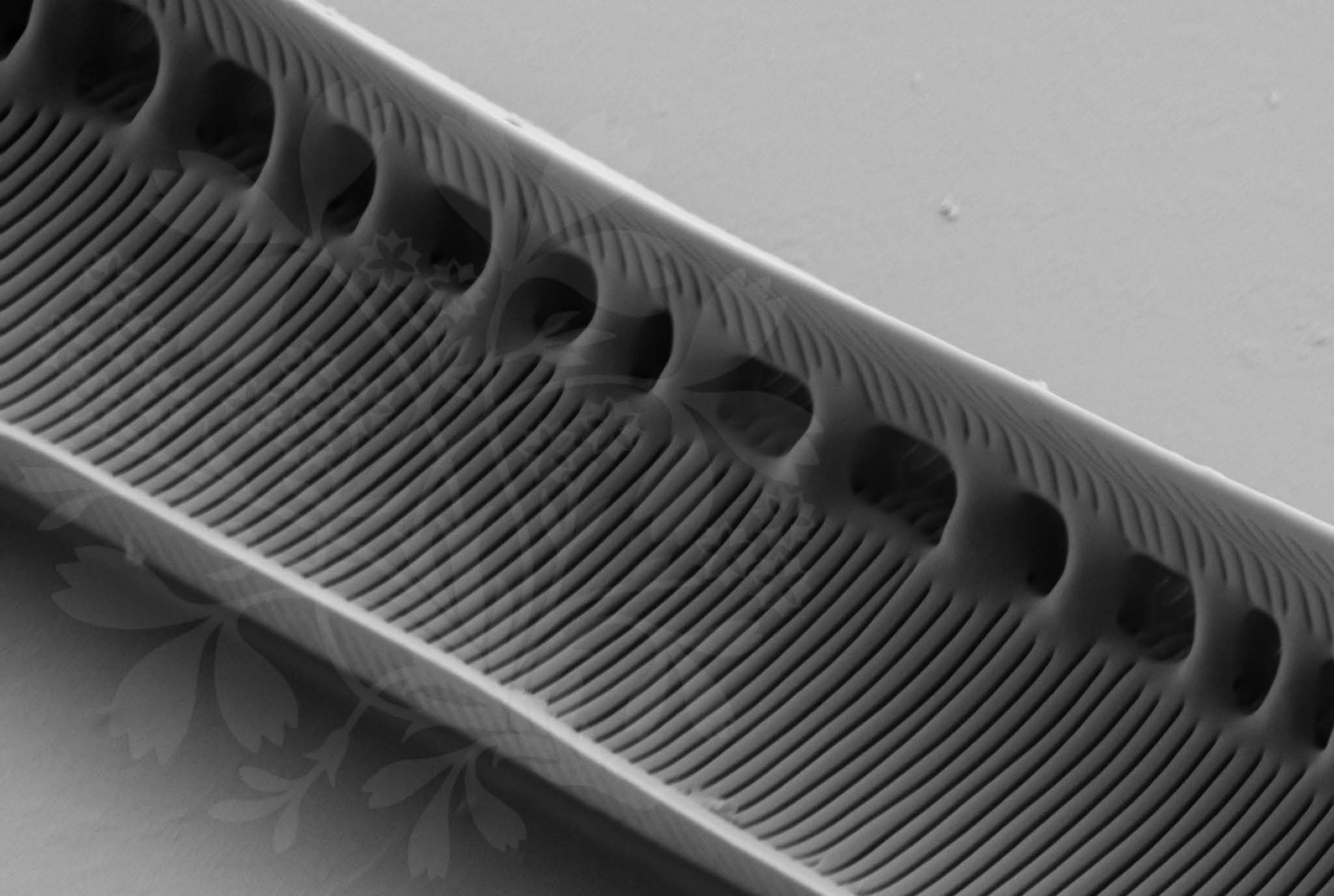
EHT = 4.00 kV

Signal A = SE2 Date :21 Sep 2017

WD = 5.1 mm

File Name = BC0787_13.tif





1 μm

Mag = 12.00 K X

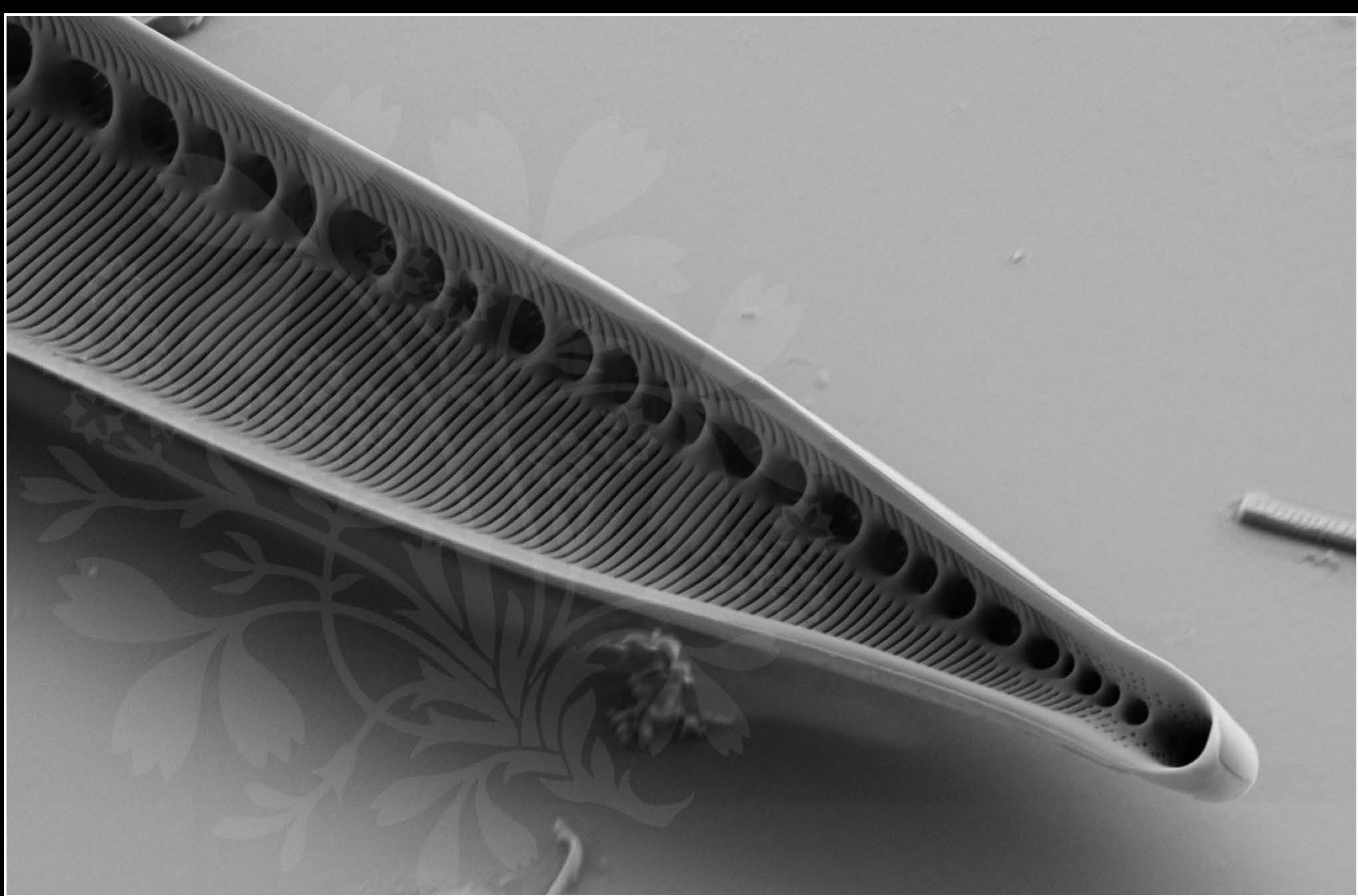
EHT = 4.00 kV

Signal A = SE2 Date :21 Sep 2017

WD = 5.1 mm

File Name = BC0787_14.tif





1 μm

Mag = 7.50 K X

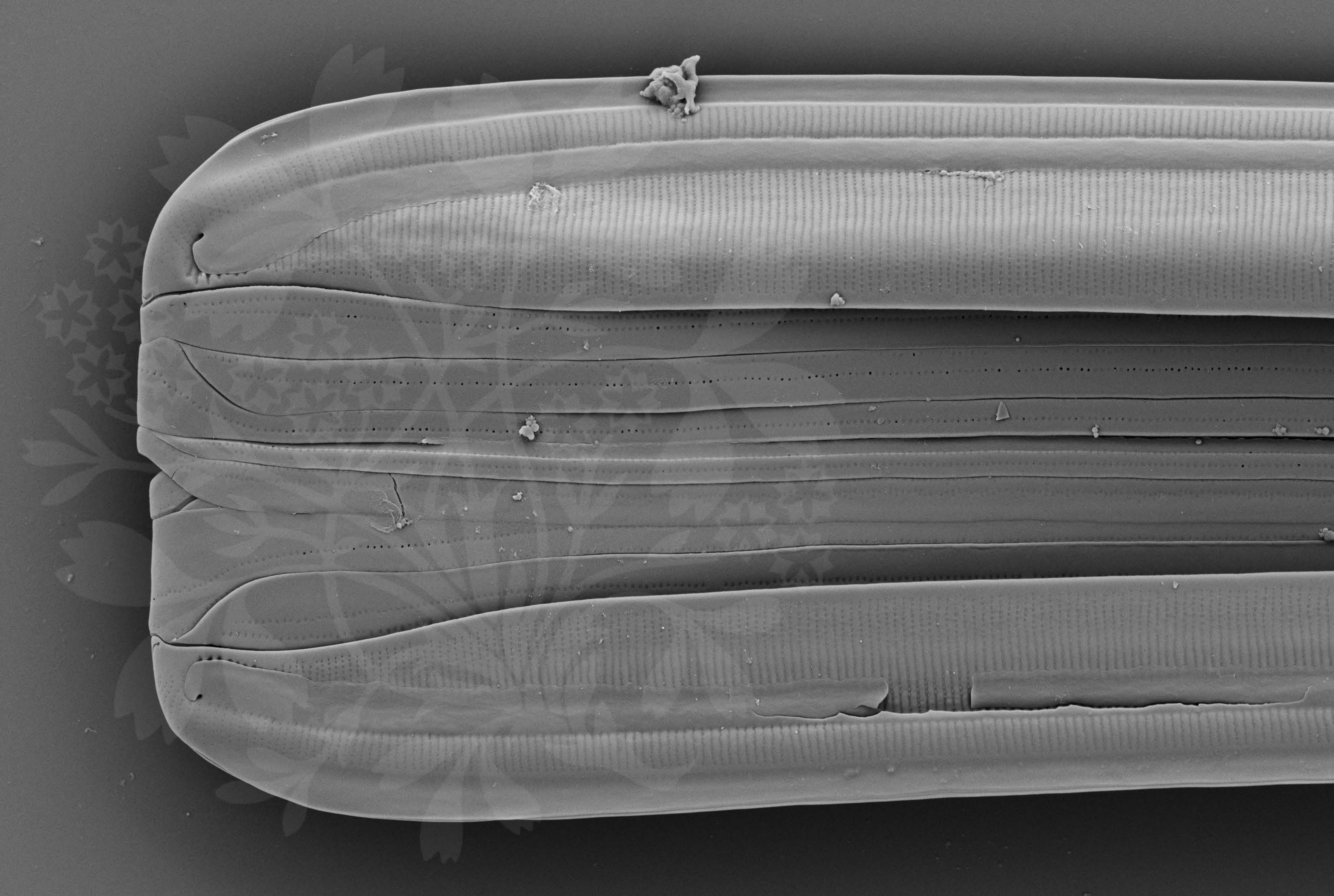
EHT = 4.00 kV

Signal A = SE2 Date :21 Sep 2017

WD = 5.1 mm

File Name = BC0787_15.tif





2 μ m

Mag = 4.00 K X

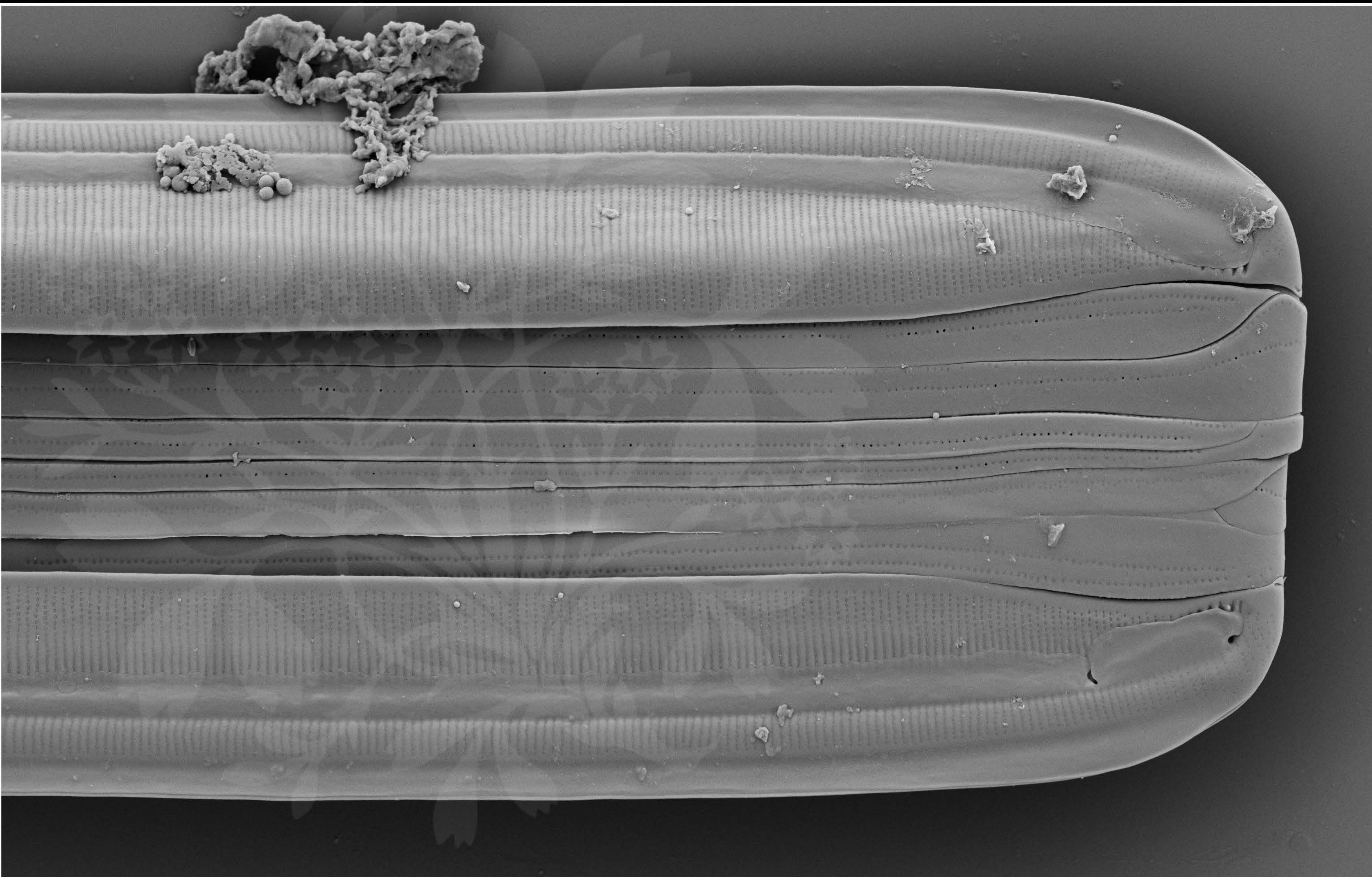
EHT = 4.00 kV

Signal A = SE2 Date :21 Sep 2017

WD = 7.7 mm

File Name = BC0787_16.tif





2 μ m

Mag = 4.00 K X

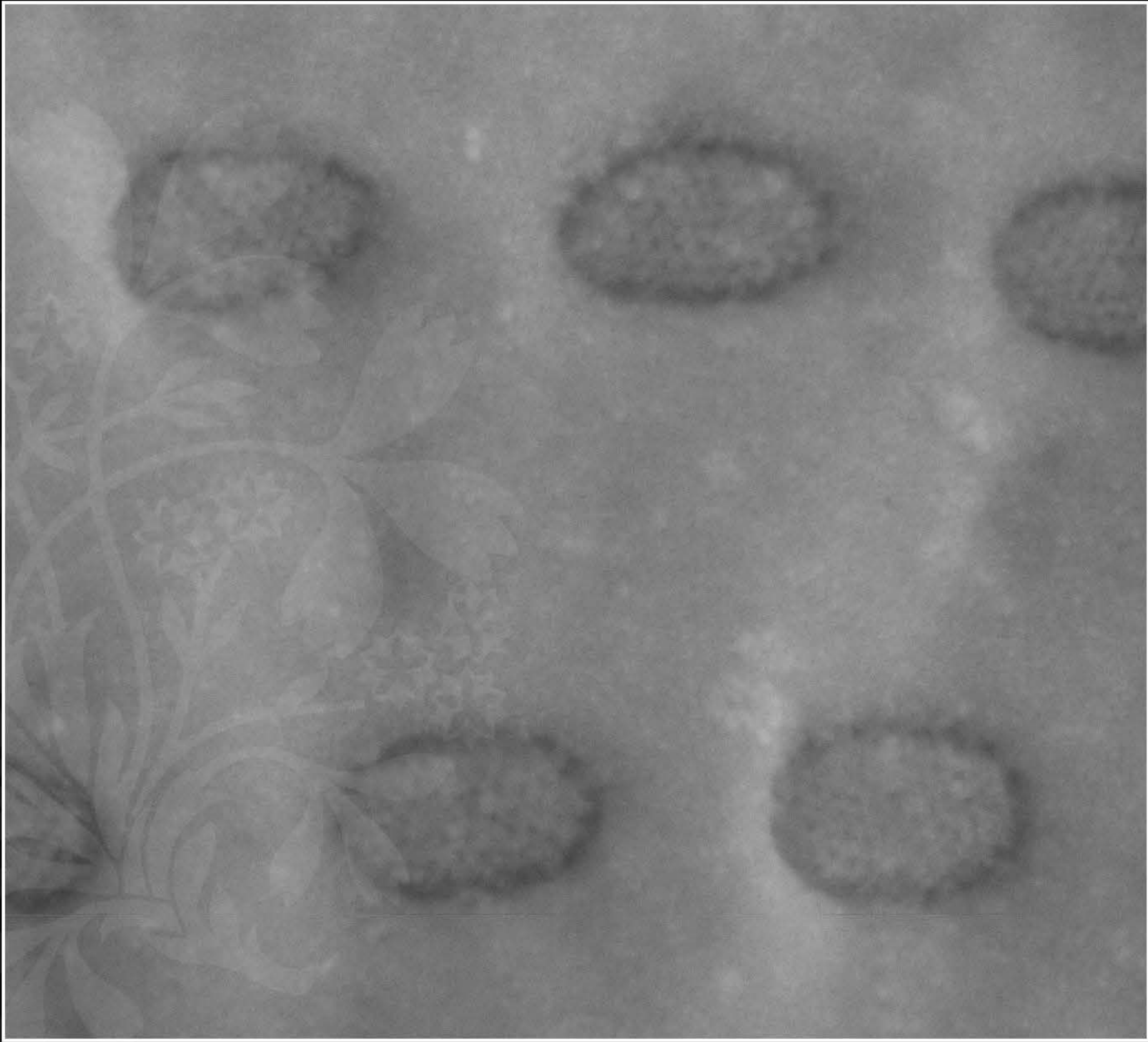
EHT = 4.00 kV

Signal A = SE2 Date :21 Sep 2017

WD = 7.7 mm

File Name = BC0787_17.tif





30 nm
└───┘

Mag = 250.00 K X

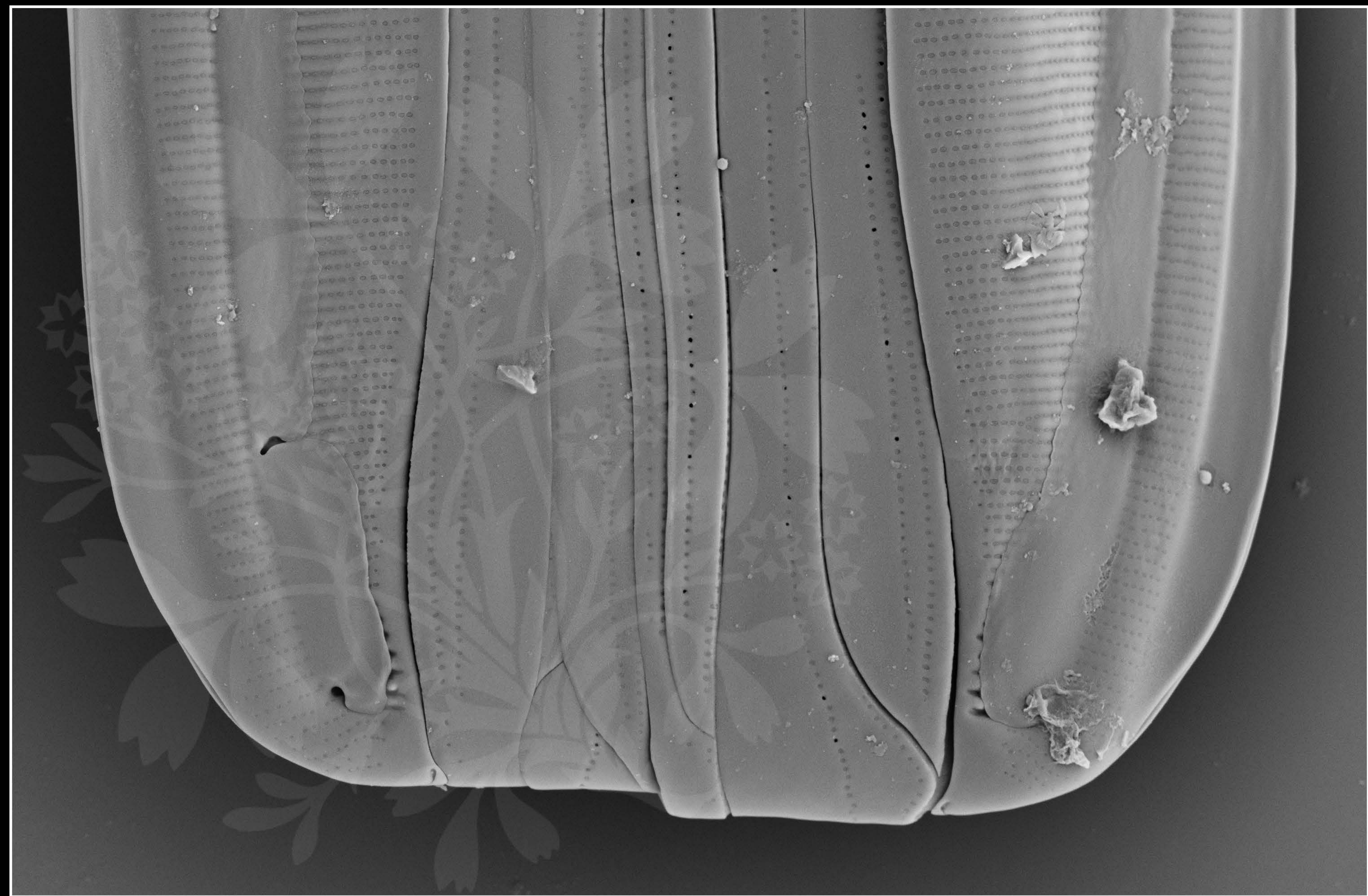
EHT = 4.00 kV

Signal A = SE2 Date :21 Sep 2017

WD = 7.7 mm

File Name = BC0787_18.tif





1 μm

Mag = 7.00 K X

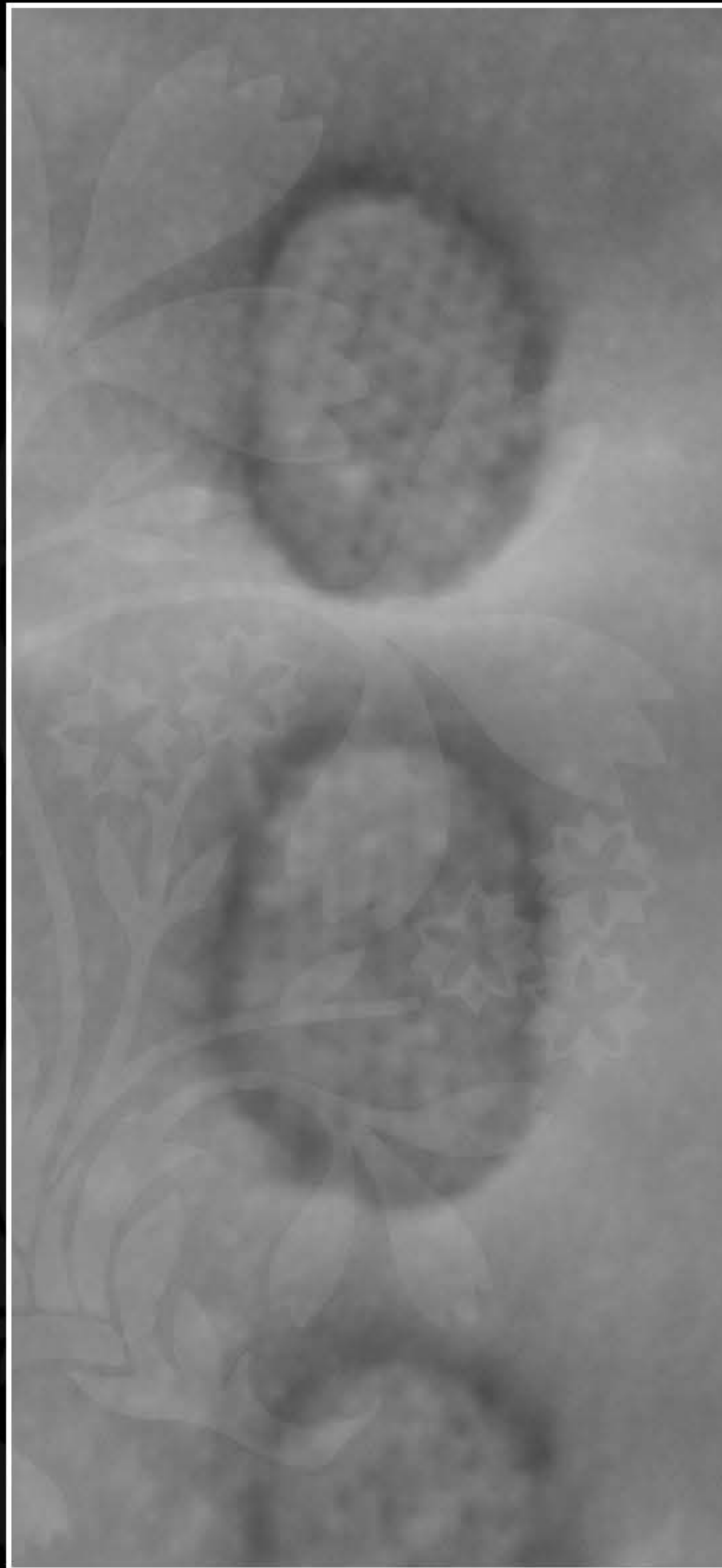
EHT = 4.00 kV

Signal A = SE2 Date :21 Sep 2017

WD = 7.7 mm

File Name = BC0787_19.tif





20 nm
└─┘

Mag = 282.84 K X

EHT = 4.00 kV

Signal A = SE2 Date :21 Sep 2017

WD = 7.4 mm

File Name = BC0787_20.tif

